

SOUTH & WEST PLANS PANEL

28th November - 2024



APPLICATION: 24/03369/FU

PROPOSAL

Change of use from a C3 (Dwelling House) to a C2 (Residential Institution) as young person's supported accommodation

ADDRESS

**16 Chiltern Court
Rodley
Leeds
LS13 1PT**











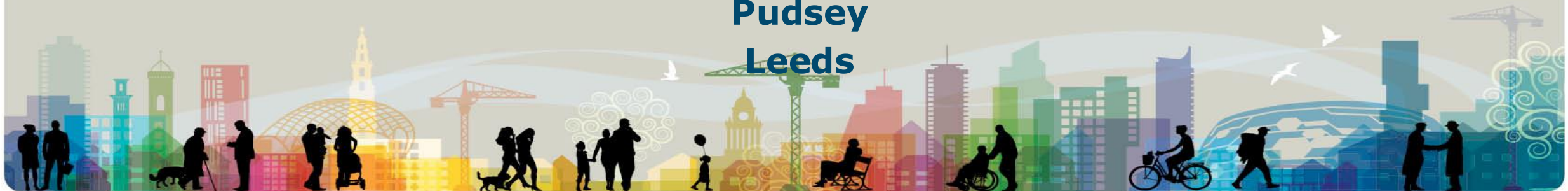
APPLICATION: 23/04830/FU

PROPOSAL

Erection of a part 6 storey, part 4 storey, building comprising 19 apartments (Class C3) and commercial space (Class E) with associated parking, landscaping, and ancillary facilities

ADDRESS

**Land East Of Owlcotes Lane And South Of
Woodlands Road
Stanningley
Pudsey
Leeds**

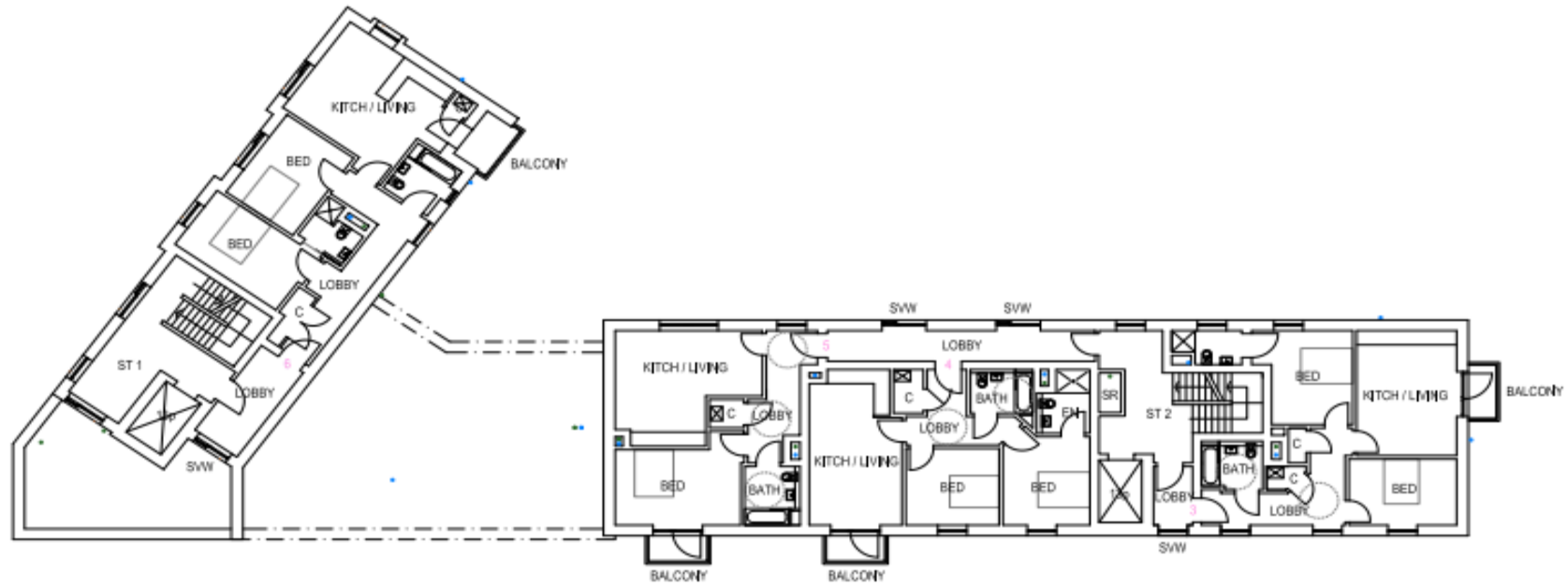




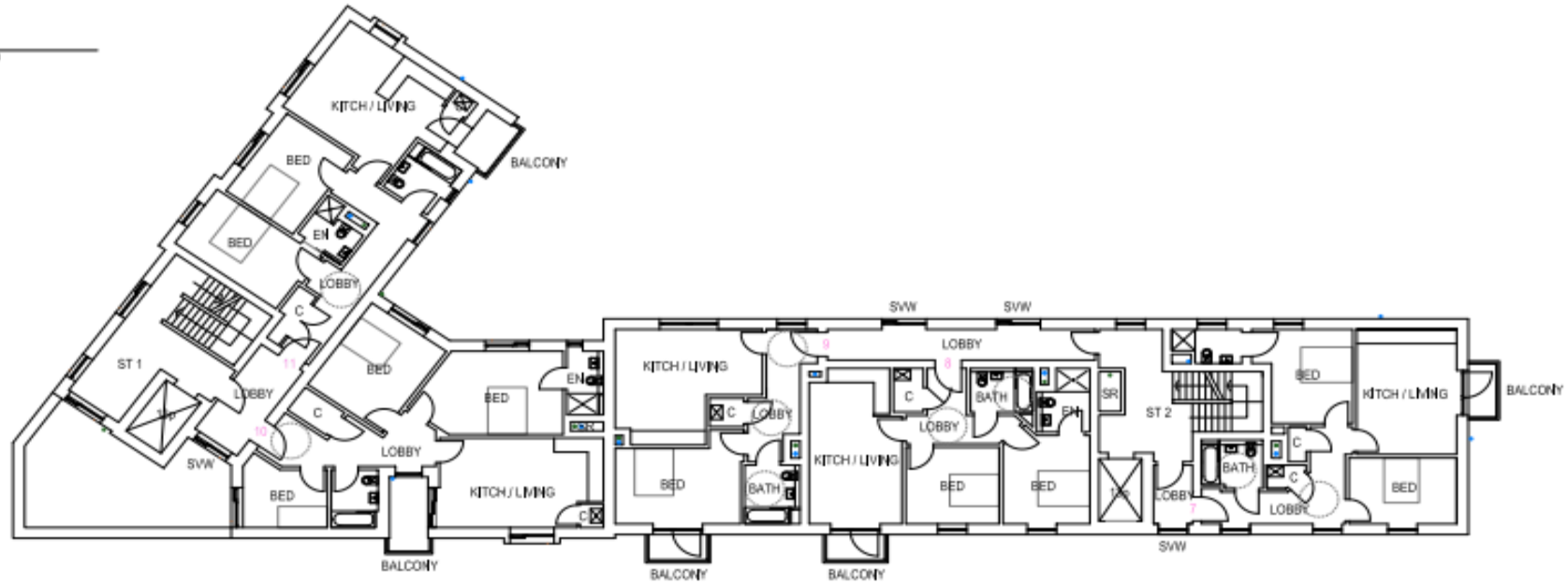








01 FIRST
2004/12/00



OUTLINE OF INITIAL BUILDING MASSING SHOWN IN DASHED RED LINE



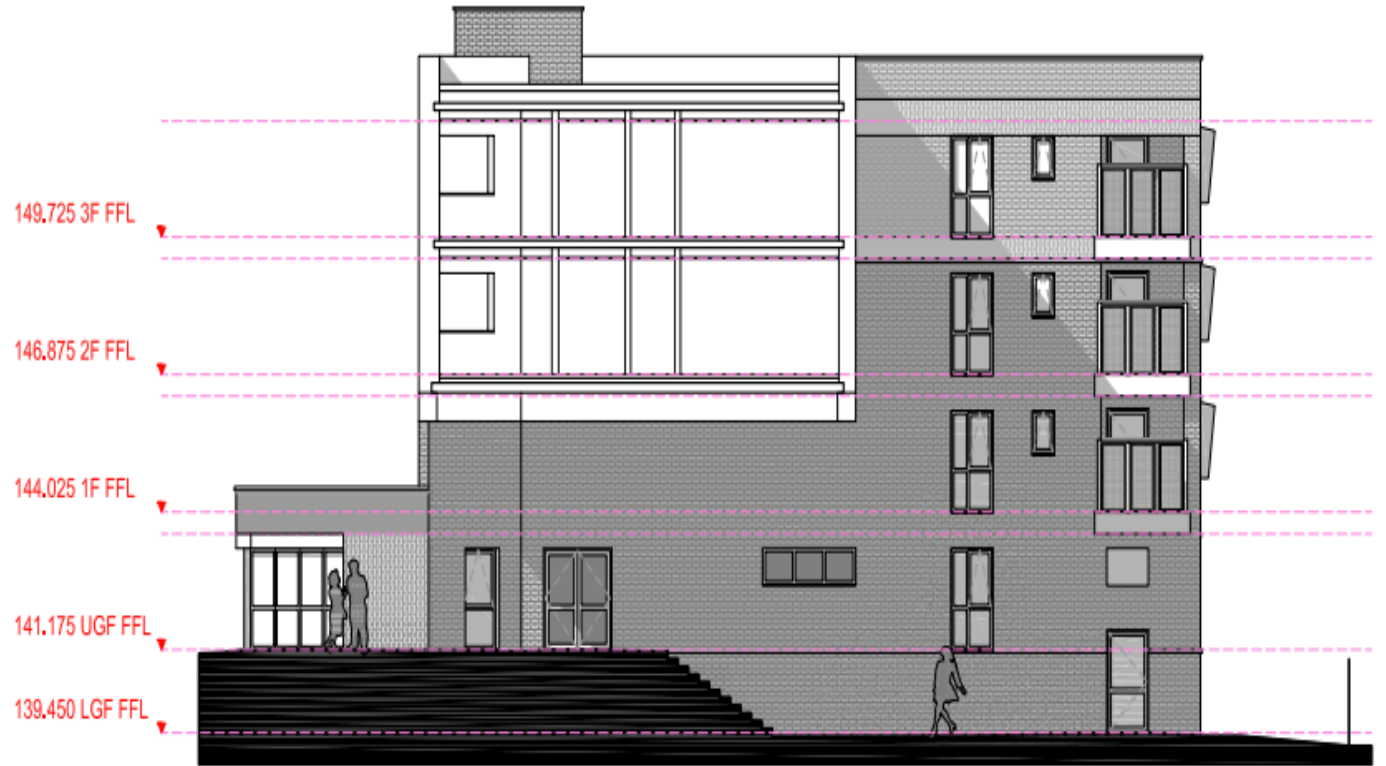
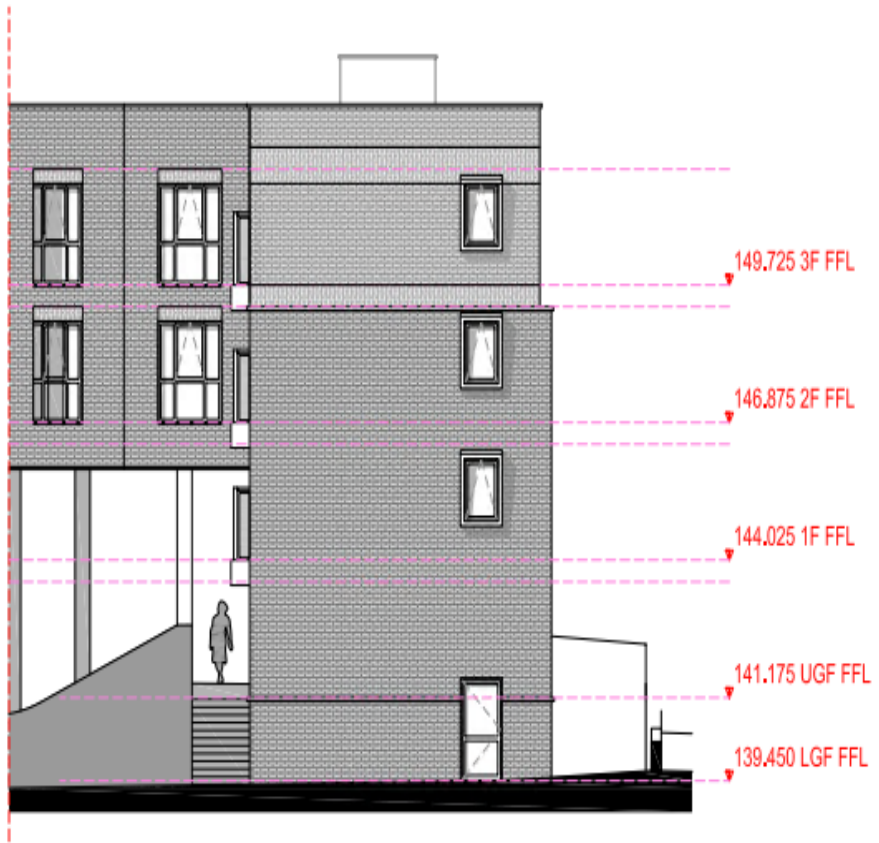
SECTION AA - SECTION THROUGH OWLCOTES LANE



SECTION AA - SECTION THROUGH OWLCOTES LANE (WIDER CONTEXT)



01 REAR FACADE (TO OWLCOTES LANE)
Scale 1:100

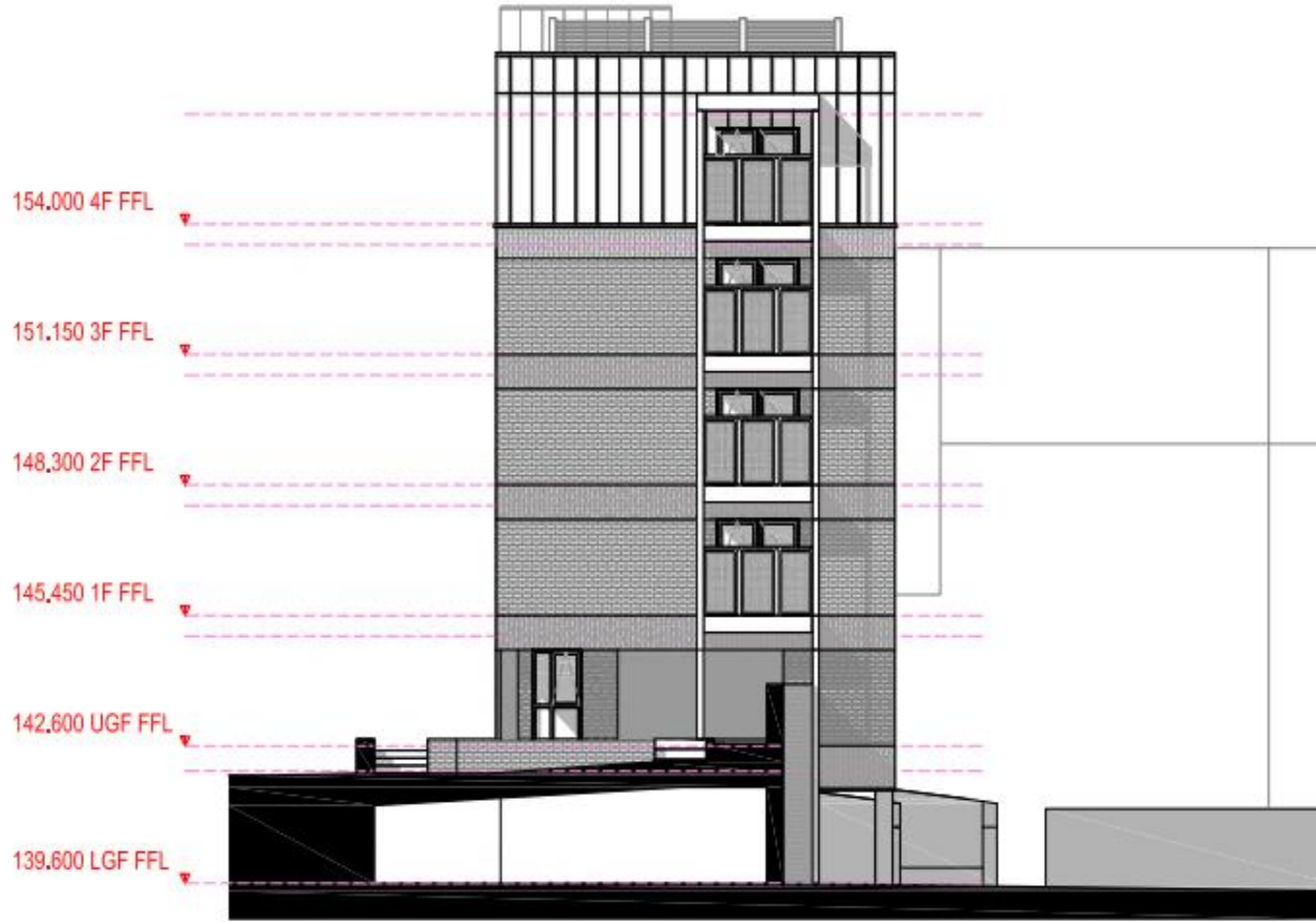


01 SIDE ELEVATION (BUILDING FACING WOODLANDS ROAD)
Scale 1:100

02 REAR ELEVATION (BUILDING FACING WOODLANDS ROAD)
Scale 1:100

DEVELOPMENT PROPOSAL

Materials



- Red Brick
- Buff Brick
- Render – Limestone White
- Windows & Doors will be in anthracite grey (upvc or aluminum)
- Balconies & Screening will be in anthracite grey metal work along with timber (tbc)
- Standing Seem Roof

All materials to agreement of the LPA

02

SIDE FACADE (FACING RAILWAY STATION)

Scale 1:100















APPLICATION: 22/07648/FU

PROPOSAL

**Erection of a 120 capacity Wedding Venue, 40
Holiday Lodges, and a Cafe/Community Hub
building**

ADDRESS

**Fleet Lane
Oulton
Leeds
LS26**







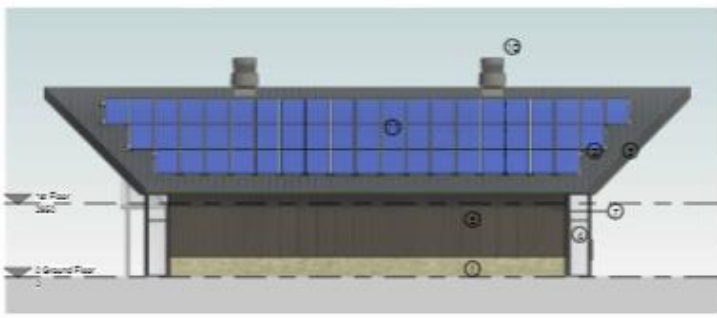




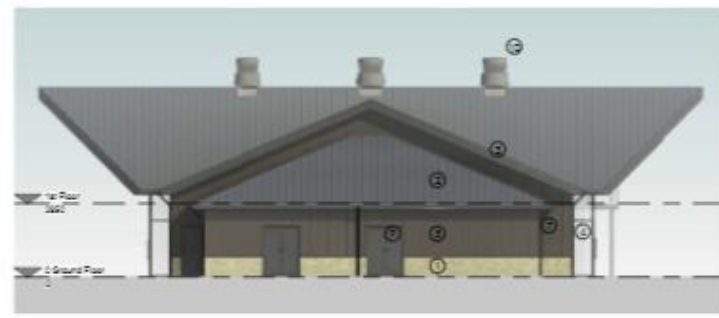




East



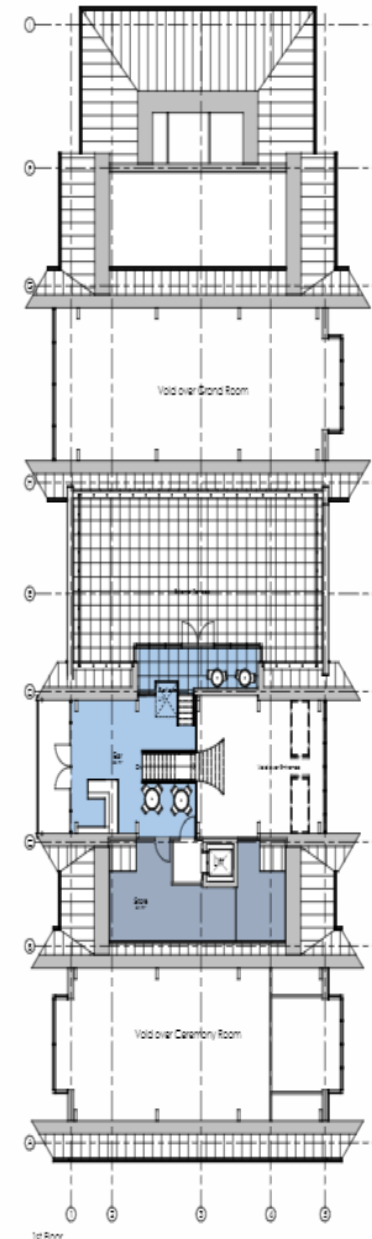
South



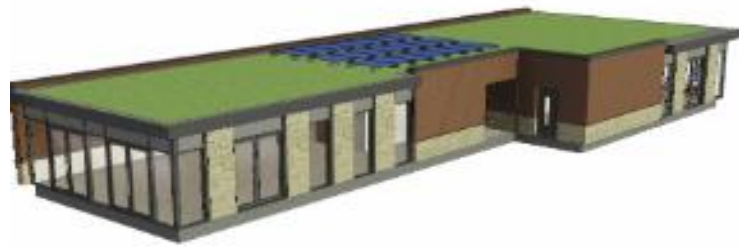
North



West







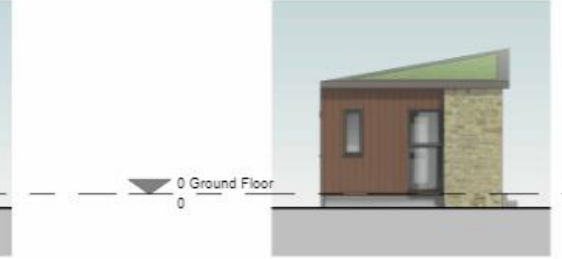
3D View 1







North



East



South



West

Materials Schedule

- ① Stone to approved sample
- ② Sedum Roof
- ③ Cedar Eaves / Soffit
- ④ Double Glazed Window to approved sample
- ⑤ Cedar Cement Cladding to approved sample
- ⑥ Double Glazed Door to approved sample
- ⑦ Black UPVC Rainwater Goods
- ⑧ Glass Balustrade
- ⑨ Double Glazed Door to approved sample





North



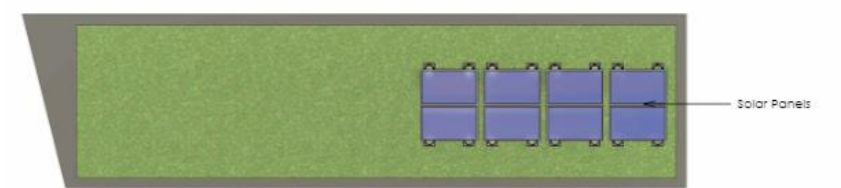
East



South



West



Roof

- Materials Schedule
- ① Stone to approved sample
 - ② Sedum Roof
 - ③ Cedar Eaves / Soffit
 - ④ Double Glazed Window to approved sample
 - ⑤ Cedar Cement Cladding to approved sample
 - ⑥ Double Glazed Door to approved sample
 - ⑦ Black UPVC Rainwater Goods
 - ⑧ Glass Balustrade
 - ⑨ Double Glazed Door to approved sample



North



South



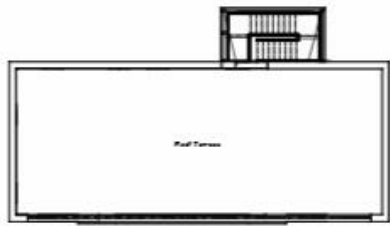
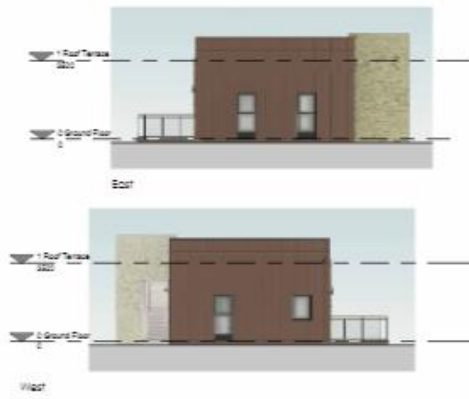
East



West

- Materials Schedule
- ① Stone to approved sample
 - ② Sedum Roof
 - ③ Cedar Eaves / Soffit
 - ④ Double Glazed Window to approved sample
 - ⑤ Cedar Cement Cladding to approved sample
 - ⑥ Double Glazed Door to approved sample
 - ⑦ Black UPVC Rainwater Goods
 - ⑧ Glass Balustrade
 - ⑨ Double Glazed Door to approved sample





6 1 Roof Terrace
1:100



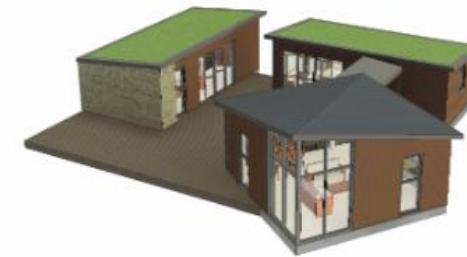
5 0 Ground Floor
1:100



3D View 1



3D View 2



3D View 3



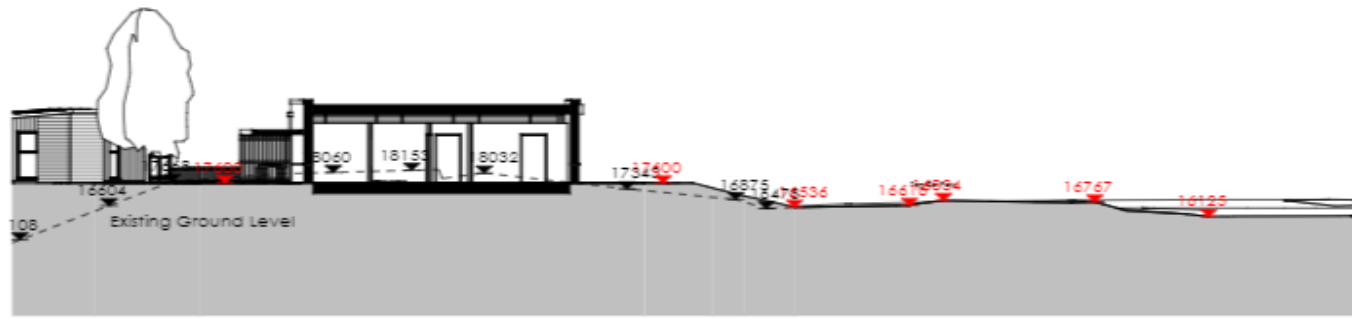




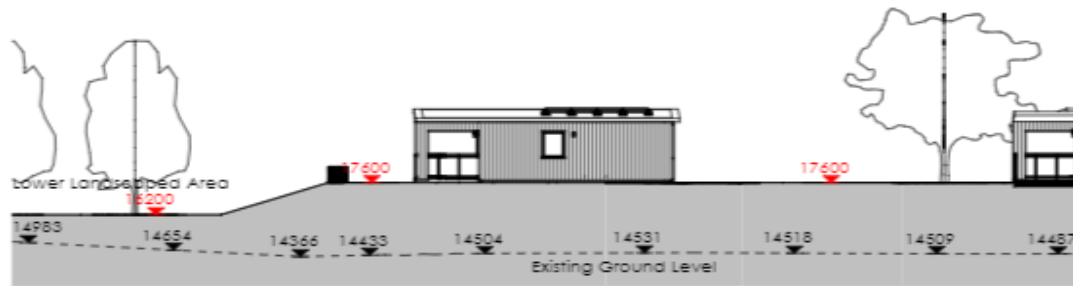
Section U-U



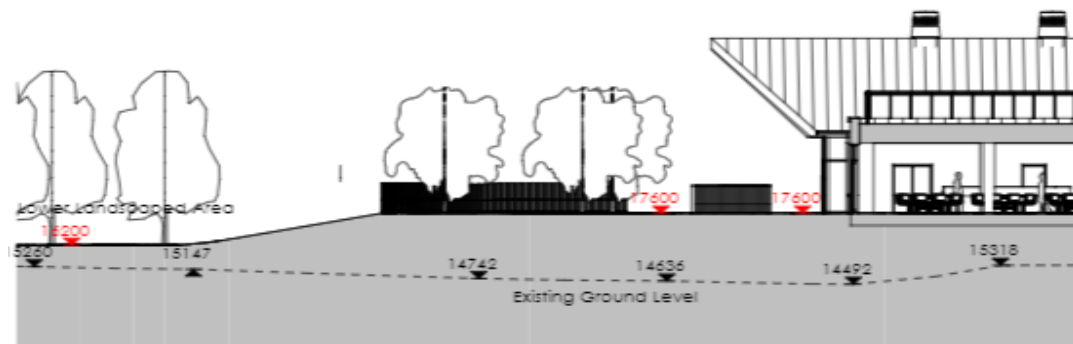
Section T-T



Section KK

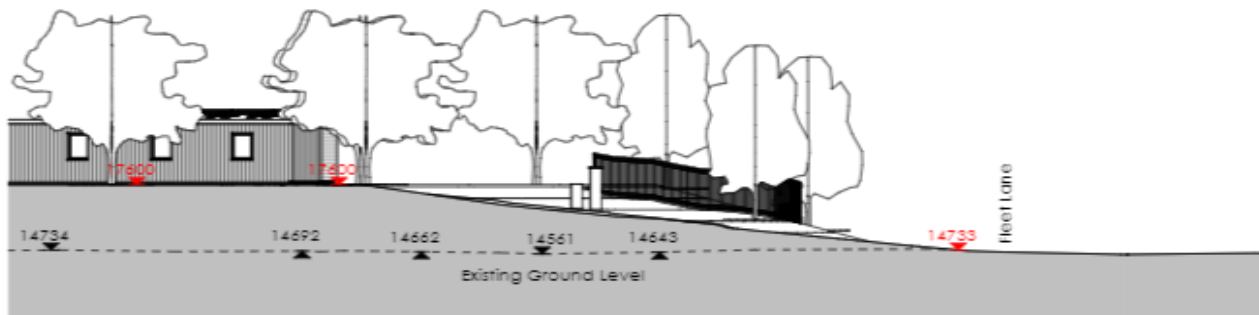


Section LL

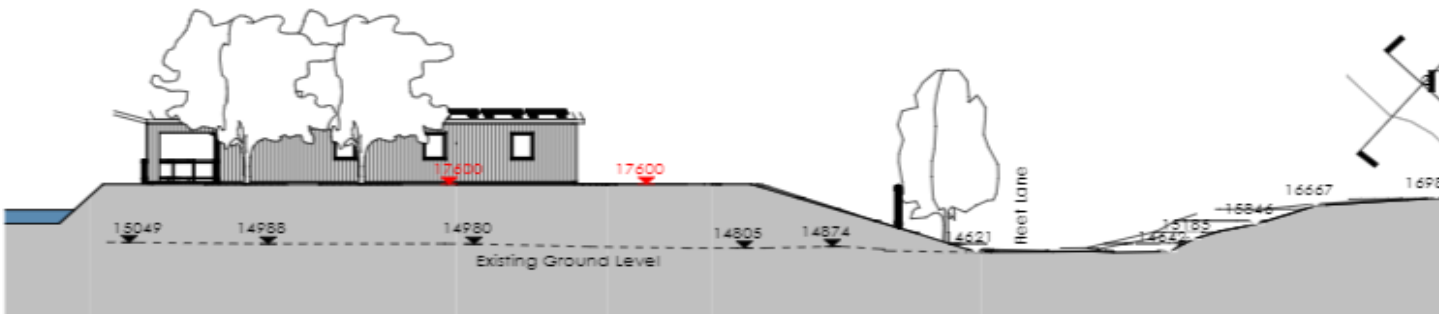


Section MM

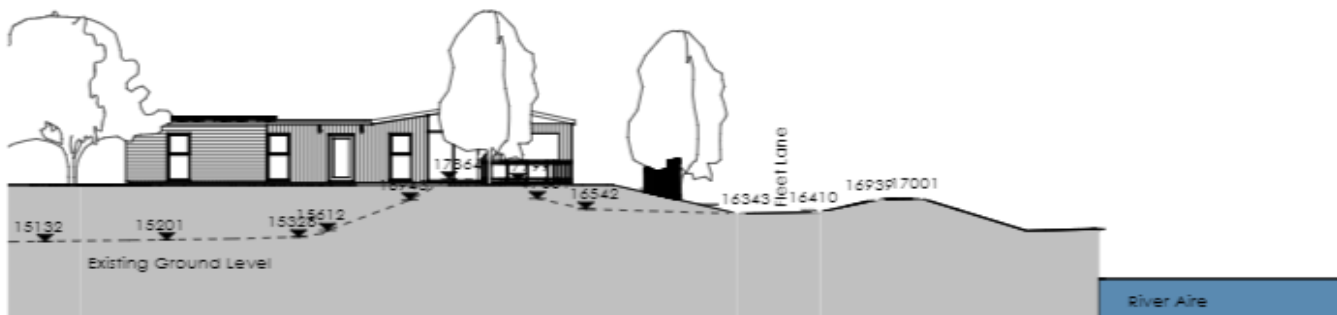




Section H-H



Section H



Section J-J

Proposed Level

Existing Ground Level







SOUTH & WEST PLANS PANEL **END OF PRESENTATION**

